

SWAN HARBOR FARM PARK

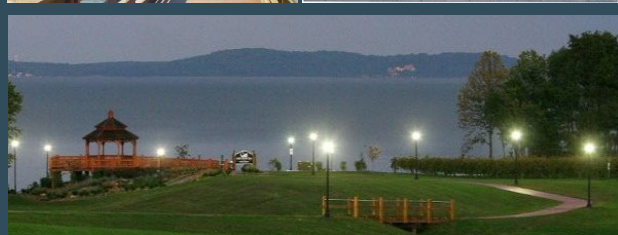
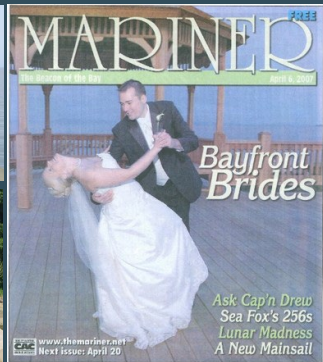


DESCRIPTION

PHOTOS

● Havre de Grace, Harford County, MD

Harford County Department of Parks and Recreation (DPR) was interested in enhancing the Swan Harbor Farm Park with the construction of a pavilion, pedestrian walkways, a gazebo and boardwalk, handicap accessible trails and parking, ramps, fishing piers and boat docking facilities. BayLand coordinated with the Design Review Team, made up of members of the County DPR, Department of Public Works, Procurement Office and the Maryland Department of Natural Resources, which determined the final concept plan. BayLand prepared detailed design plans, construction documents and provided construction management services. The project was constructed on-time and on-budget. Today, the Swan Harbor Farm Park is widely recognized as an ideal site for waterfront weddings and receptions, corporate meetings, office parties, retreats and more.



● Client | Harford County Department of Parks & Recreation

Engineer | BayLand

Completed | 2006

Construction Cost | \$800,000